



3MURI

Project

News Version X5



STADATA

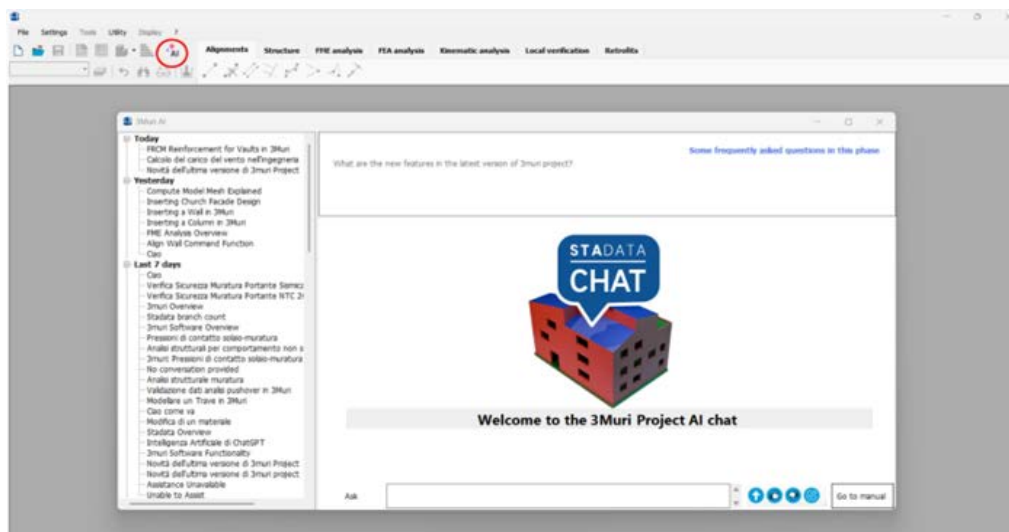
STRUCTURAL SOFTWARE

News

1) 3Muri Project AI: A Leap into the Future of Engineering Design.

The introduction of the Artificial Intelligence Module in 3Muri Project marks a momentous advance in the way users interact with the software. Implemented to intuitively and immediately answer all technical questions, this module helps navigate the complexities of the software with ease.

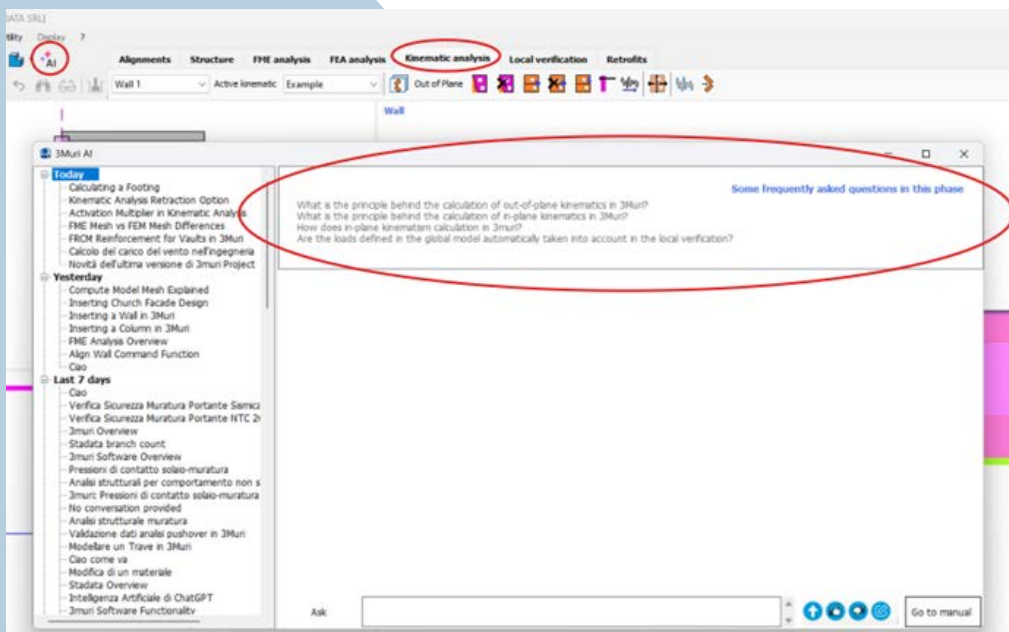
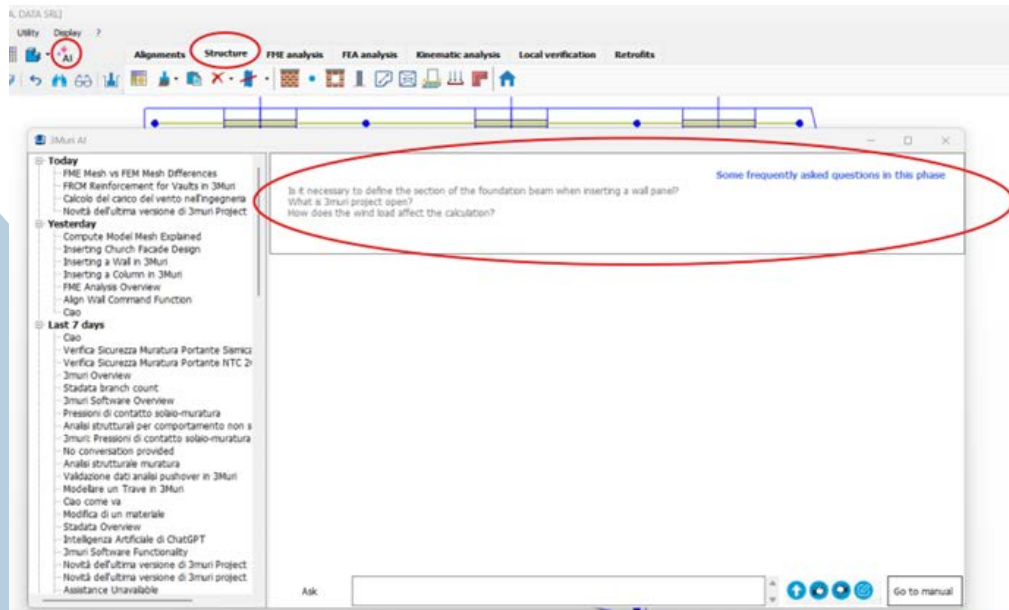
Through a chat interface, users can now access constant support, receiving real-time advice and solutions that will significantly improve the efficiency of their project work.



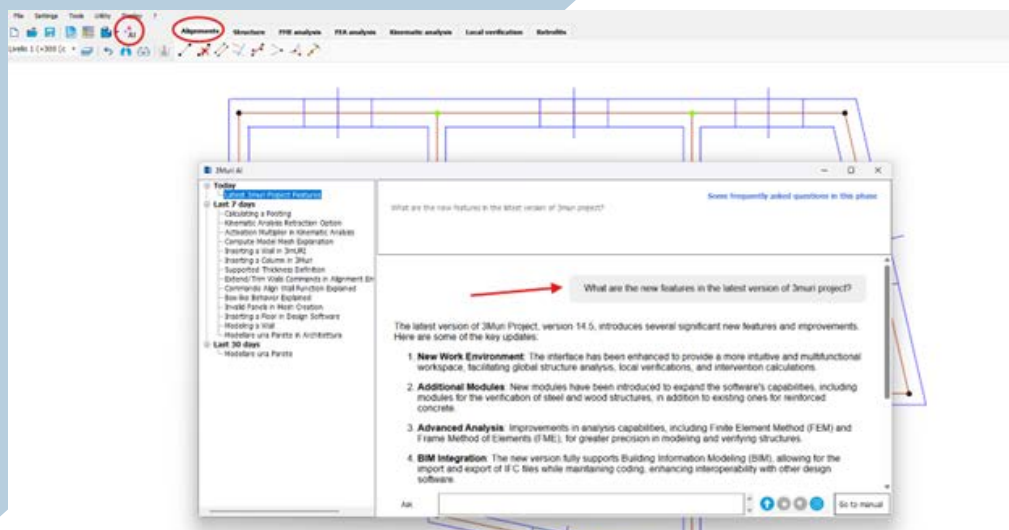
Clicking on the appropriate icon in the menu opens the artificial intelligence-supported chat window that greatly simplifies communication with the software. Users can ask specific questions, get advice on common problems, and interact with the system for immediate help, making the entire design process more agile and responsive.

In addition, the artificial intelligence chat will show some of the most frequently asked questions in the software environments in which the user is working.



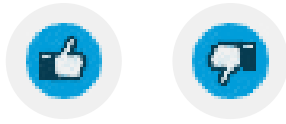


Click on the question in the box to query the AI and view the answer.



1.1) Feedback and Constant Improvement:

The feedback function built into the AI module allows users to express their satisfaction or dissatisfaction, facilitating a continuous update of the artificial intelligence.

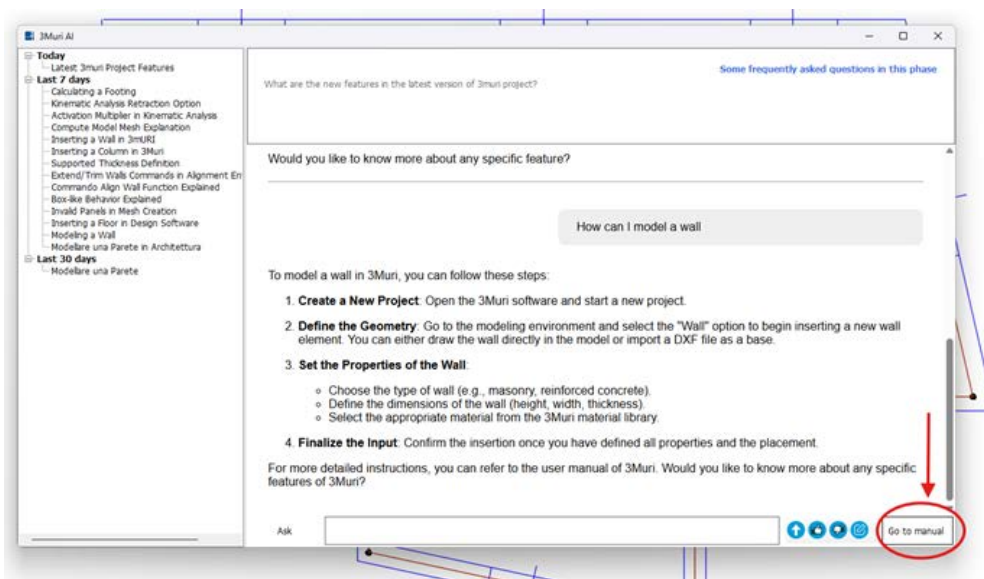


This mechanism allows STA DATA engineers to provide greater precision in the constant improvement of the AI agent. Thus, the answers provided by the system become increasingly precise and tailored to specific project needs, increasing the personalization of the support offered.

1.2) Insights and Additional Resources:

Users eager to learn more about specific 3Muri Project features will find the direct link to the user manual, available in the chat window, extremely useful. This instant access provides the user with

a wide range of informational resources that broaden understanding of the software's capabilities and support ongoing learning and technical insights.



2) DXF Export of Footings and Columns

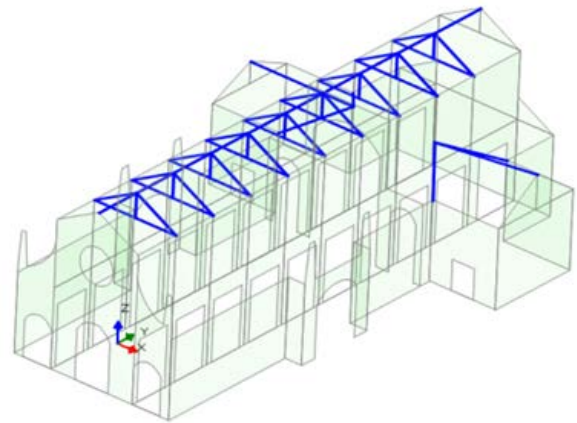
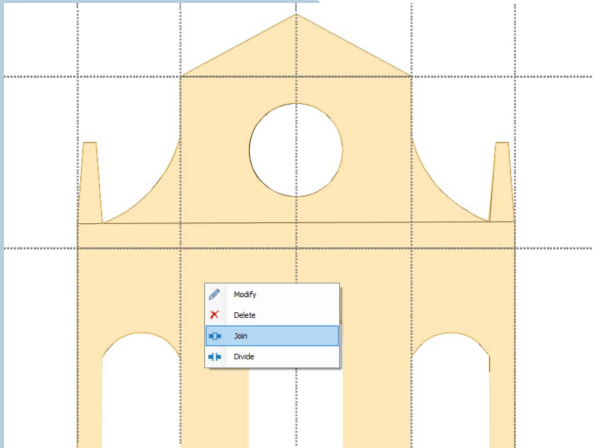
Responding to requests for greater design flexibility, 3Muri Project now allows the export of DXF drawings of the reinforcement of footings and columns.

This new feature facilitates the creation of technical documentation and collaboration with other CAD software, thereby improving consistency and integration between different engineering tools.

3) Innovations in OPEN modeler

3Muri Project once again innovates the structural design landscape by introducing new OPEN features that improve the way structural elements are managed and analyzed.

Join, cut, divide, and export operations are now possible, allowing users to easily transfer designs into the FEM environment to conduct in-depth static analysis.



This improvement not only speeds up processes but also ensures greater precision and customization of engineering work, greatly

reducing lead times and increasing the effectiveness of design solutions.

